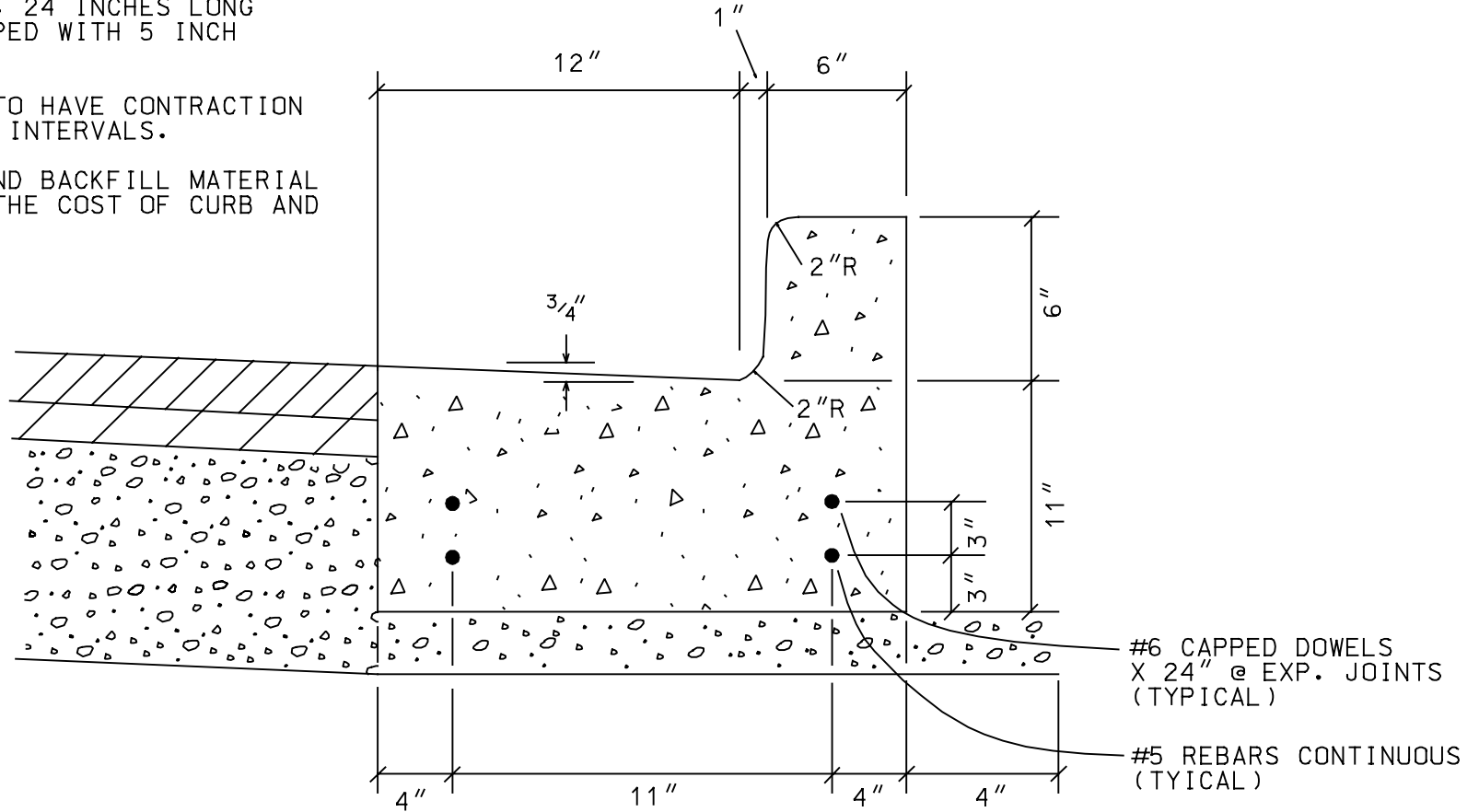


NOTES:

1. CURB AND GUTTER TO HAVE BROOM ALL EXPOSED CORNERS TO BE EDGED.
2. CURB AND GUTTER TO HAVE EXPANSION JOINTS WITH DOWEL BARS EVERY 60 FT. DOWEL BARS TO #6, 24 INCHES LONG WITH ONE END CAPPED WITH 5 INCH METAL SLEEVES.
3. CURB AND GUTTER TO HAVE CONTRACTION JOINTS AT 20 FT. INTERVALS.
4. AGGREGATE BASE AND BACKFILL MATERIAL ARE INCLUDED IN THE COST OF CURB AND GUTTER.



SCALE = N.T.S.

MAINE TOWNSHIP HIGHWAY DEPARTMENT

B 6:12 CURB AND GUTTER



REVISIONS

NO.	DESCRIPTION