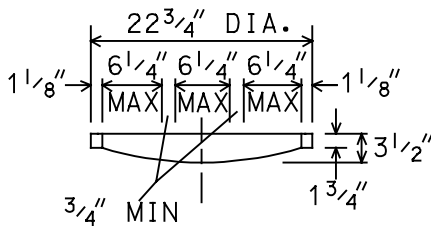
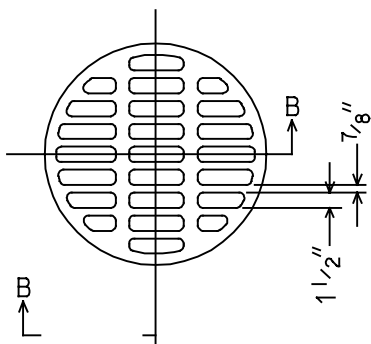
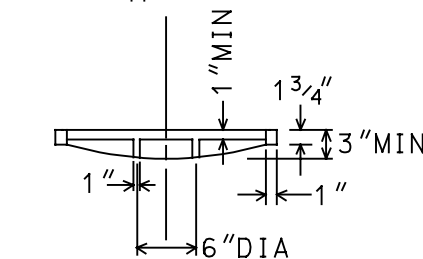
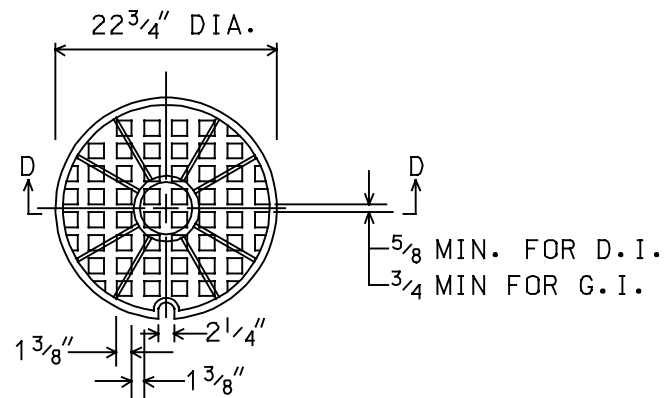


SECTION A-A
GRAY IRON
CAST FRAME
 WT. 390 LBS.

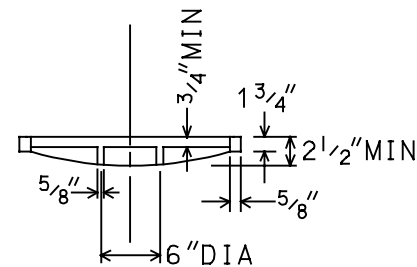


SECTION B-B
CAST OPEN LID
 WT. 116 LBS.

THE OPEN AND CLOSED LIDS MAY BE MADE OF EITHER GRAY IRON, OR DUCTILE IRON, CONFORMING TO THE STANDARD SPECIFICATIONOS. DUCTILE IRON CASTING SHALL BE GRADE 60-40-18, AND SHALL BE PROOF LOADED IN ACCORDANCE WITH FEDERAL SPECIFICATIONS RR-F-621 B, SECTION 3.8. THE PROOF LOAD SHALL BE 25,000 LBS. ON A 9"X9" CAST BLOCK.



SECTION D-D
GRAY IRON LID
 WT. 150 LBS.



SECTION D-D
DUCTILE IRON LID
 WT. 115 LBS.

CAST CLOSED LID

SCALE = N.T.S.

MAINE TOWNSHIP HIGHWAY DEPARTMENT

FRAME AND LIDS



REVISIONS

NO.	DESCRIPTION